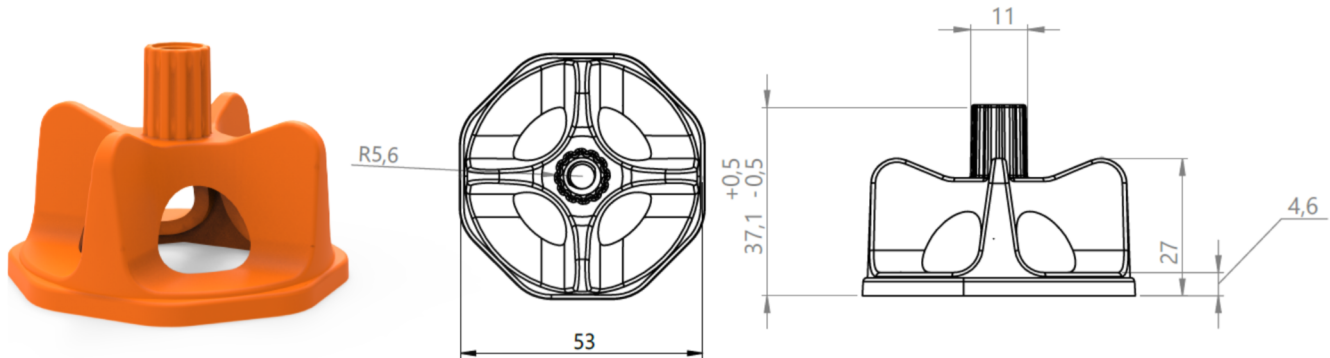


Screw Caps

Technical Drawing:



Raw Material:

| | |
|---------------|-----------------------|
| Type | Polypropylene (PP) |
| Material Code | PETOPLEN EH102 |
| Colour | Natural + Masterbatch |

Properties:

| | Typical Value (*) | Unit | Test Method |
|---------------------------------------|-------------------|-------------------|---------------|
| Resin Properties | | | |
| Melt Flow Rate (230°C/2.16 kg) | 11 | g/10 min | ASTM D1238 |
| Density | 0.905 | g/cm ³ | ASTM D1505 |
| Melting Point (DSC) | 163 | °C | ASTM D3418 |
| Mechanical Properties(**) | | | |
| Tensile Strength at Yield | 35 | MPa | ASTM D638 |
| Flexural Modulus, 23°C | 1450 | MPa | TS EN ISO 178 |
| Izod Impact Strength, 23°C (notched) | 20 | J/m | ASTM D256 |
| Rockwell Hardness | 96 | R-scale | ASTM D785 |
| Thermal Properties | | | |
| Heat Deflection Temperature, 0.45 MPa | 113 | °C | ASTM D648 |

(*) These are typical properties only and are not to be construed as specifications. Customers should confirm results by their own tests.

(**) The values given are measured based on compression molded sheet.

Compliance to Regulations:

The formulation and production of PETOPLIN EH102 conforms to the compositional requirements of the Commission Regulation (EU) No. 10/2011.

Health, Safety and Food Contact Regulations:

The detailed information of the PETOPLIN EH102 is given in the Material Safety Datasheet and Food Contact Declaration of the product. Please contact your sales representative for the food contact application compliance (e.g. EU, FDA) and other regulatory documents.

Storage:

The product should be stored in a dry area with ambient temperature below 50°C. It should be kept away from sunlight, sparks, heat and flame. Inappropriate storage conditions can lead to colour changes and the deterioration in physical properties.

Recycling:

The product is not hazardous or toxic and is suitable for recycling. If it can't be recycled, the waste material can be disposed at a suitable landfill site, or at an approved waste incineration facility in accordance with applicable local, provincial, state and federal regulations.

Issue 1: May 2020
Equus Industries Ltd
PO Box 601
Blenheim
Phone: 03 578 0214 Fax 03 578 0919
Email: admin@equus.co.nz
Web: www.equus.co.nz