



# EQUUS SOPREMA SOPRASUN PLUS MEMBRANE SYSTEM

AUGUST 2024



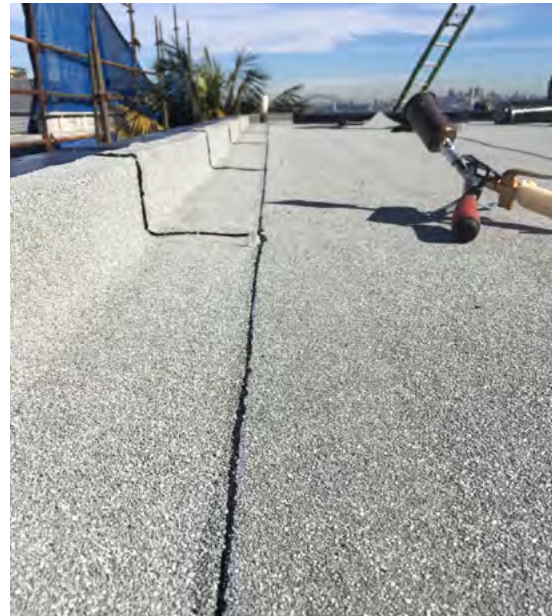
 **masterspec partner**

4421ES Equus Soprasun Plus Roof & Deck Membrane by SOPREMA



**EQUUS SOPREMA SOPRASUN PLUS is a two-layer bitumen waterproofing membrane system, designed to meet the requirements and environmental challenges of the New Zealand climate, while still providing an economical waterproofing solution.**

**This system offers the building owner an attractive coloured slate finish, provides protection against the demanding local weather conditions, and maintains peace of mind with a 20 year material warranty.**



## EQUUS SOPREMA SOPRASUN PLUS

The EQUUS SOPREMA SOPRASUN PLUS membrane system consists of the SOPRASUN PLUS 4.5KG MINERAL cap sheet torched to the SOPRASUN PLUS 3 base sheet, forming a two-layer waterproofing membrane system suitable for flat roof waterproofing.

SOPRASUN PLUS 4.5KG MINERAL is a plastomeric reinforced modified bitumen waterproofing membrane (APP), manufactured to retain excellent technical characteristics. The composite reinforcement, and APP modified bitumen allows the softening point to increase from 50°C to 140-150°C. This creates a more forgiving membrane when installing in hot conditions.

This system can be used on plywood or concrete substrates to form a standard cold roof system or over thermal insulation to provide a warm roof system.

**Available in Grey**



### System Components:

- SOPRASUN PLUS 4.5KG MINERAL
- SOPRASUN PLUS 3
- Bitumen Primer
- Alsan Mastic 2200
- Thermal insulation for warm roof systems

### Key Benefits:

- CodeMark Certified
- BRANZ Appraised
- Economical solution
- Proven UV resistance
- Excellent dimensional stability and durable performance
- Can be installed any time of the year, wide temperature tolerance
- Available in SOPRATHERM Warm Roof System



**CodeMark**   
CMNZ70151

  
**BRANZ Appraised**  
Appraisal No.819 [2019]

### Equus SOPREMA Technical Support:

- Project specific specifications and details
- Condensation risk analysis for warm roof systems
- Wind uplift study for warm roof systems
- On-site quality assurance
- Nationwide network of Certified Applicators
- Warranties available

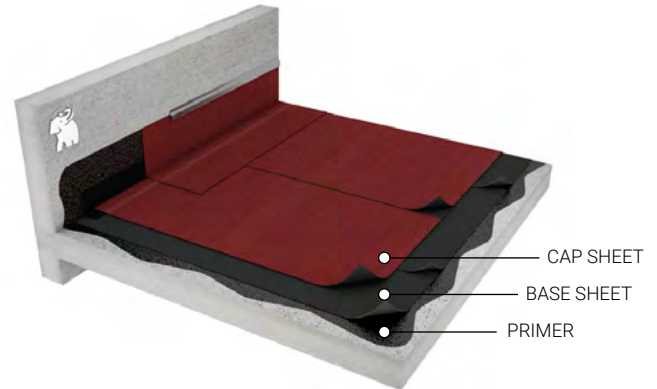
## SYSTEM OPTIONS

EQUUS SOPREMA SOPRASUN PLUS membrane systems offer great waterproofing design tailored to your needs.

### CONVENTIONAL ROOF SYSTEM

**Exposed roof | Non-trafficable**

The waterproofing system is applied directly onto the construction deck. This is a fast and cost effective way to waterproof an exposed roof.

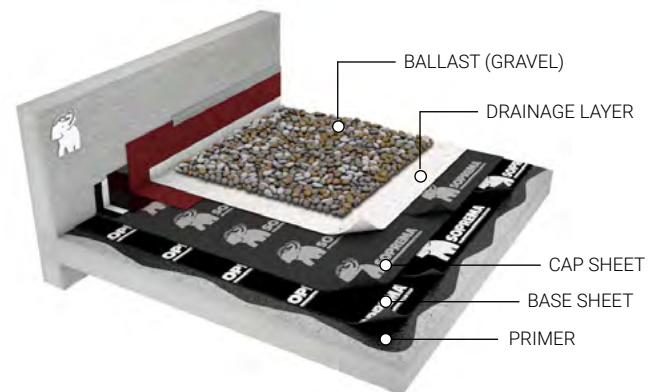


### BALLASTED / GREEN ROOF SYSTEM

**Protected roof | Non-trafficable**

The waterproofing system is protected from weathering and UV.

Using a drainage layer will allow the roof to drain freely and not be affected by the build up of silt that can form over the years.

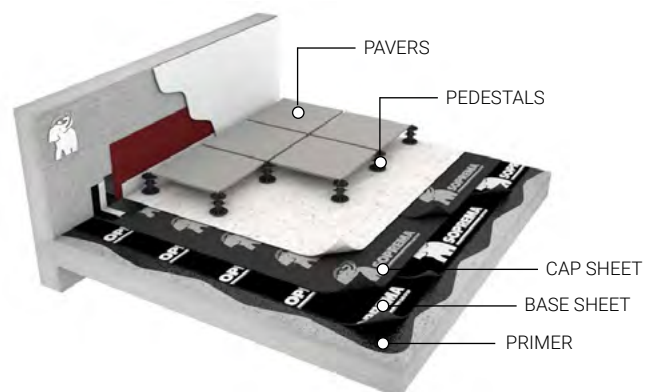


### PAVED ROOF SYSTEM

**Protected roof | Trafficable**

Designed for areas with heavy pedestrian traffic. The waterproofing system is installed, and then protected with paving slabs.

The Equus FIXPLUS pedestal range pavers allows continuous and effortless adjustments and leveling of slabs.

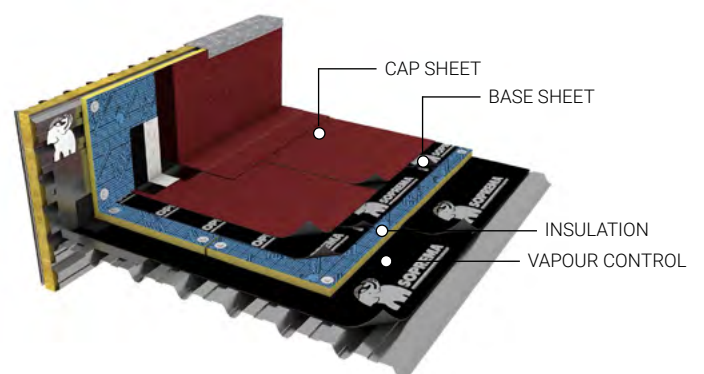


### WARM ROOF SYSTEM

**Protected roof | Non-trafficable**

Provides the longest available expected lifetime based on proven durability of the waterproofing in NZ climate conditions.

It's a light-weight, thermally insulated roofing system which consists of a two-layer membrane system applied over a rigid thermal PIR or SOPRAROCK mineral wool insulation board and vapour barrier. This guarantees a continuous and efficient thermal resistance (R-value) for a healthier building.





# WHO ARE WE?

Equus Industries provides technical waterproofing solutions for Architects, Engineers, Property Managers, and Contractors in the building industry. One system does not fit all.

Equus can provide complete solutions, systems, specifications, technical support and warranties.

Equus is the Authorised Distributor for SOPREMA in New Zealand. SOPREMA was founded in 1908 in France and has over 100 factories worldwide producing waterproofing materials and thermal insulation.



## Equus Southern

Unit 6/100 Fitzgerald Ave  
Christchurch

Ph: 03 353 2434

southern@equus.nz

## Equus Central

45 Hutt Rd, Petone  
Wellington

Ph: 04 576 0333

central@equus.nz

## Equus Northern

211 Archers Rd, Wairau Valley,  
Glenfield, Auckland

Ph: 09 415 4314

northern@equus.nz

## Find us on:

masterspec

ARCHIPRO

archify