

EQUUS CHEVALINE DEXX

Flexible reinforced roof and deck membrane



Chevaline DEXX is a liquid applied, single layer glass fibre mat reinforced membrane for use in sealing old and new flat and near-flat roofs, walk out decks and patios. The material is a heavy-bodied waterborne acrylic paste ready to use from the container. It is formulated for high adhesion and water resistance, with toughness combined with flexibility in the cured film. This makes it particularly useful where areas are subject to foot traffic. The membrane system can also be used for light vehicular traffic as a two-layer glass fibre mat reinforced system to accommodate stresses in all directions. Topcoats are also available for various service conditions.

Chevaline DEXX is suitable for a wide range of applications including wet areas and under tiles.

Complete system accessories include:

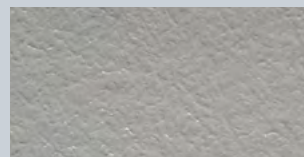
- Chevaline DEXX Primer
- Chevaline Epistixx Primer
- Fibreglass Mat
- Chevaline DEXX Topcoat
- Traxx 2000 Wearcoat

Key Benefits:

- 100% NZ made
- Proven durability with 38+ years in service history
- Proven UV resistance
- Easy to apply and maintain long term
- Applicable to a variety of surfaces in both horizontal and vertical situations
- Life expectancy of 25 years with regular maintenance
- Wide colour range available
- Zero odour application

Available Colours:

Standard Grey (00A05)



Chevaline DEXX is supplied as Standard Grey (00A05) and White. Custom colours are available to match any colour chart.

Technical Support:

- Project Specific specifications and details
- On-site quality assurance
- Approved/licensed application nationwide
- Extended Warranties available

EQUUS CHEVALINE DEXX

Flexible reinforced roof and deck membrane



Equus Southern

Unit 6/100 Fitzgerald Ave
Christchurch

Ph: 03 353 2434

southern@equus.nz

Equus Central

45 Hutt Rd, Petone
Wellington

Ph: 04 576 0333

central@equus.nz

Equus Northern

211 Archers Rd, Wairau Valley,
Glenfield, Auckland

Ph: 09 415 4314

northern@equus.nz

Find us on:

masterspec

ARCHIPRO

archify